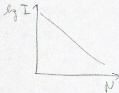


- "Exp." convergence w/ wiggles



- Improved modeling framework
 - increase "test" rate — block test improvement
 - improve basis choice — CFAB improvement
 - pre-computation of dynamic susceptibility?



$$H_0 + \cos(\omega t) \hat{V}$$

$$U_I = \mathbb{1} - \frac{1}{i\omega} \int_0^{\omega} \tau$$

$$\cos(\omega t) e^{i(t-\tau)H_0} \hat{V} e^{-i\tau H_0} dt$$